

Grays Harbor Residential Real Estate

# Market at a Glance

4th Quarter 2012



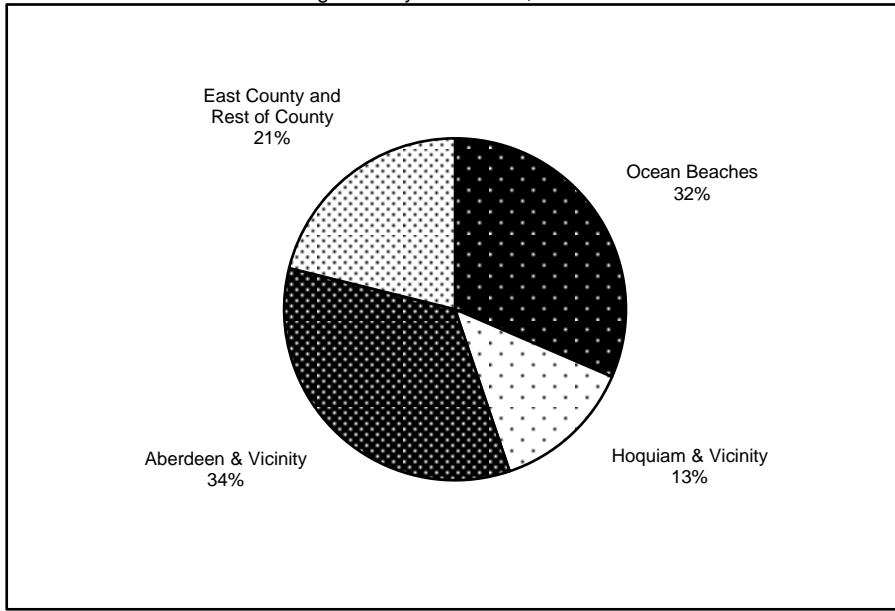
Prepared for Clientele of **Travis Jelovich**

Windermere Real Estate / Grays Harbor, Inc.

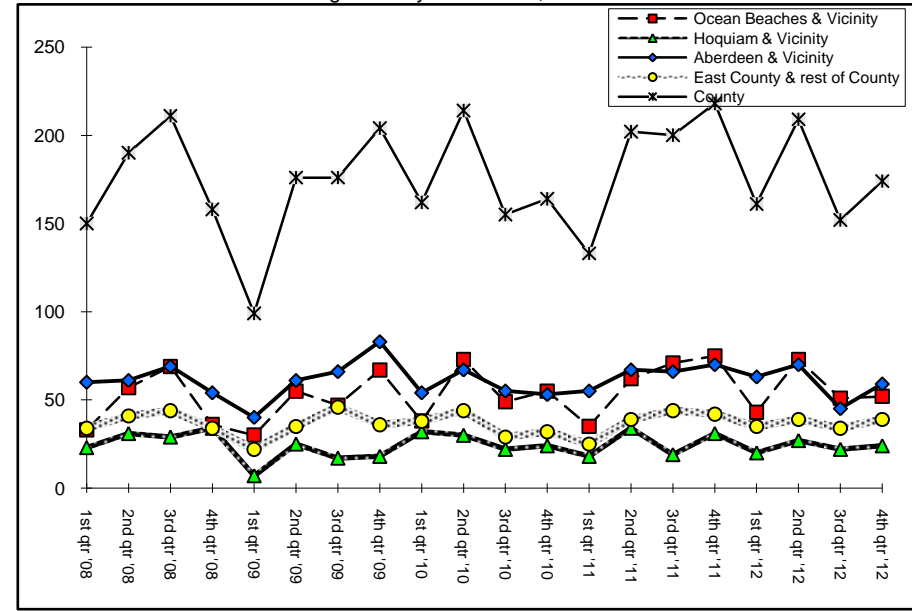


# Grays Harbor County

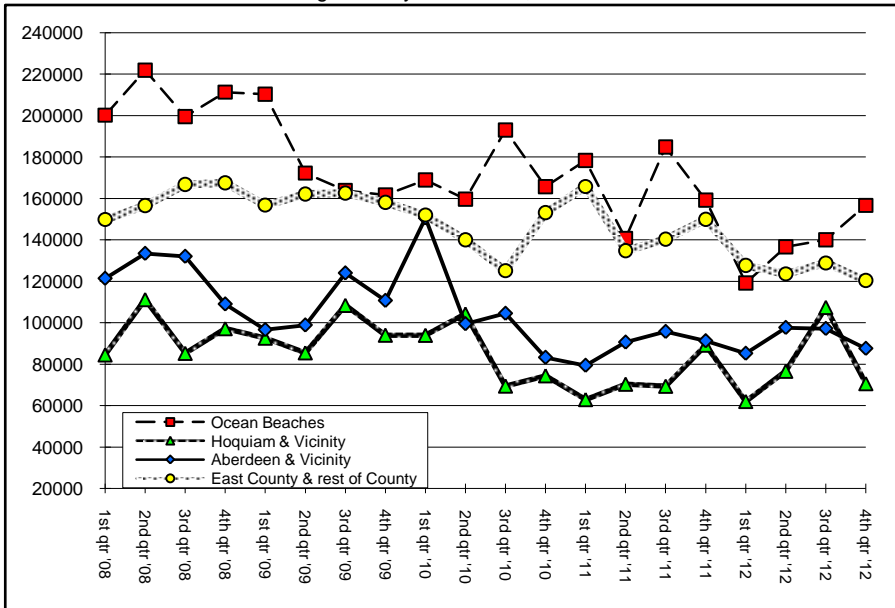
12 Month Sales Activity  
Used Single Family Residential, 5 acres or less



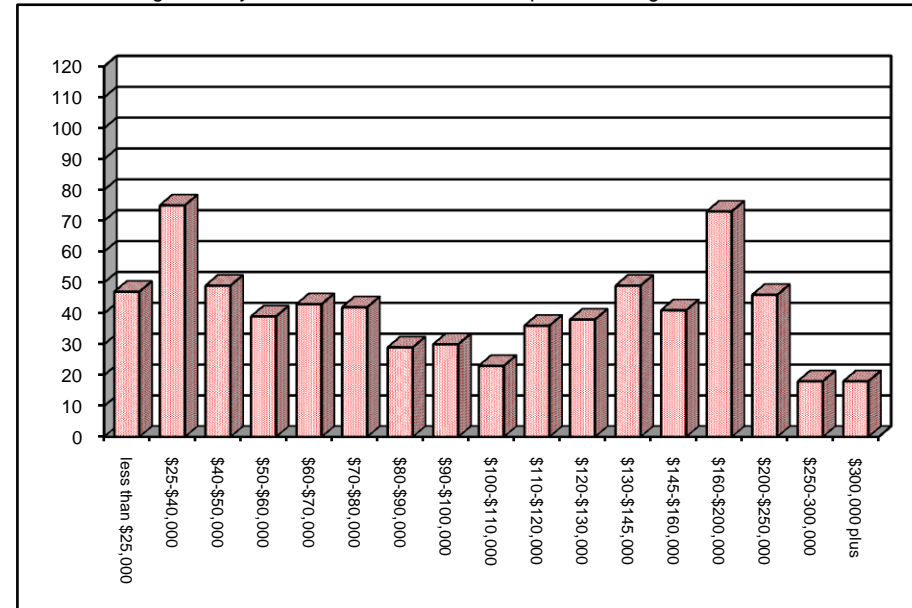
Closed Sales  
Used Single Family Residential, 5 acres or less



Quarterly Average Sale Price  
Used Single Family Residential, 5 acres or less

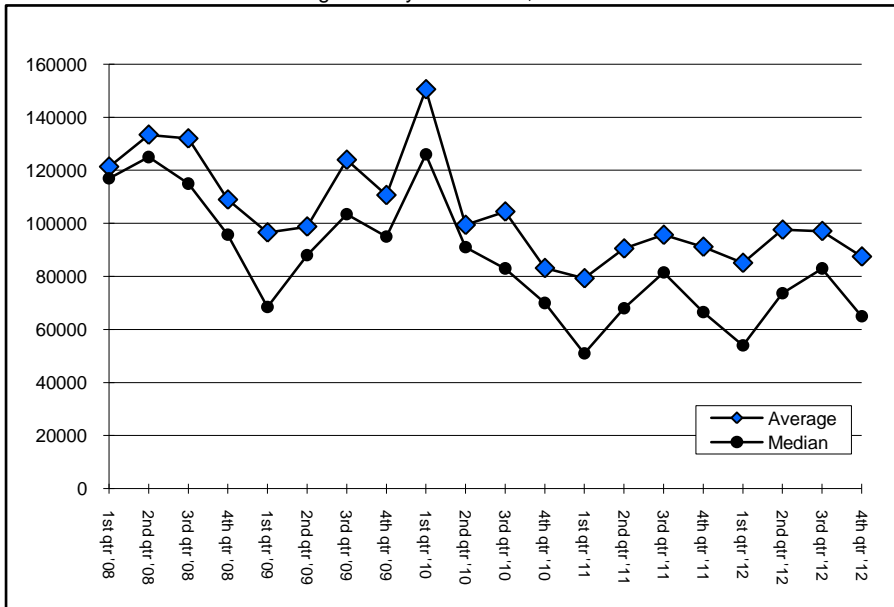


Price Ranges  
Used Single Family Residential for the 12 month period ending December 31, 2012



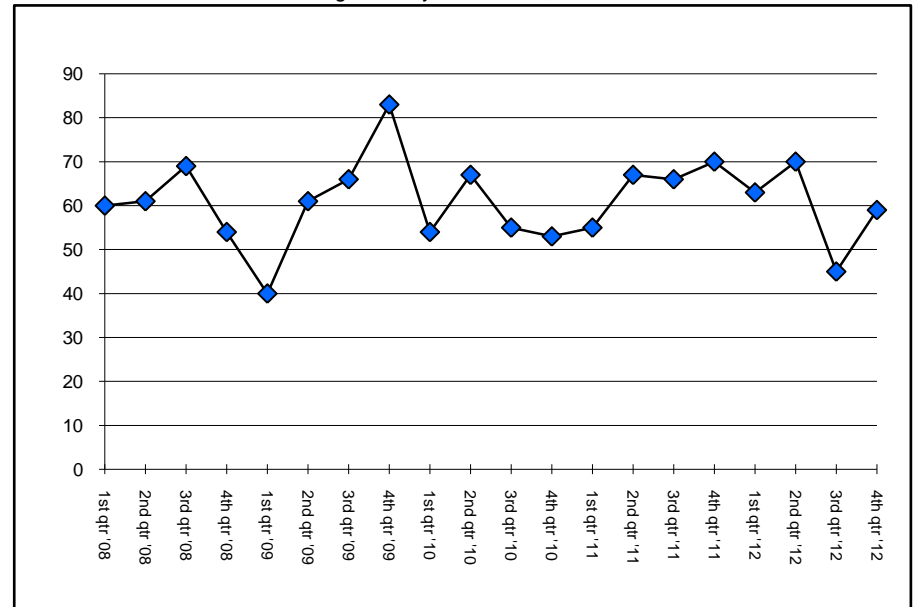
# Aberdeen & Vicinity

Average/Median Price  
Used Single Family Residential, 5 acres or less



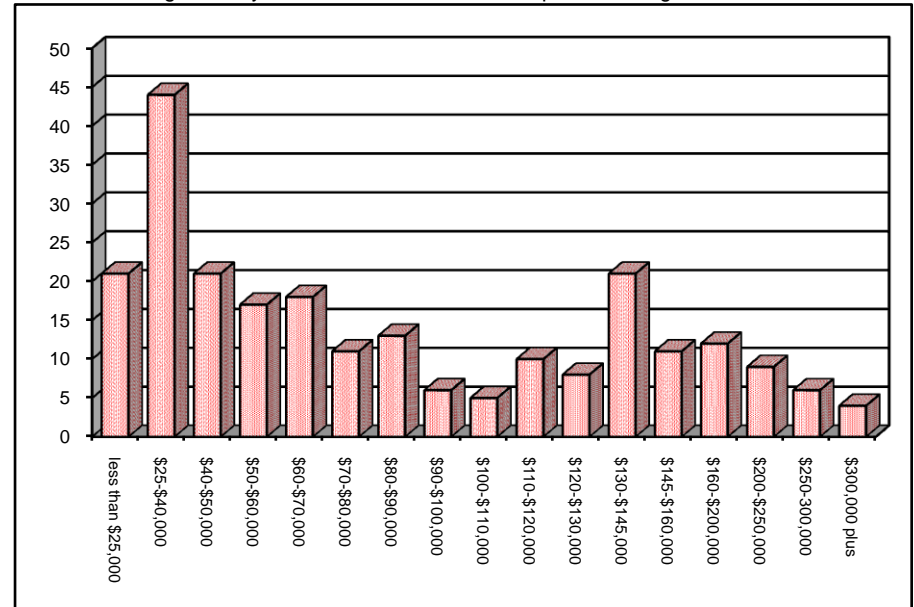
Courtesy of Windermere Real Estate / Grays Harbor, Inc.

Closed Sales  
Used Single Family Residential, 5 acres or less



Price Ranges

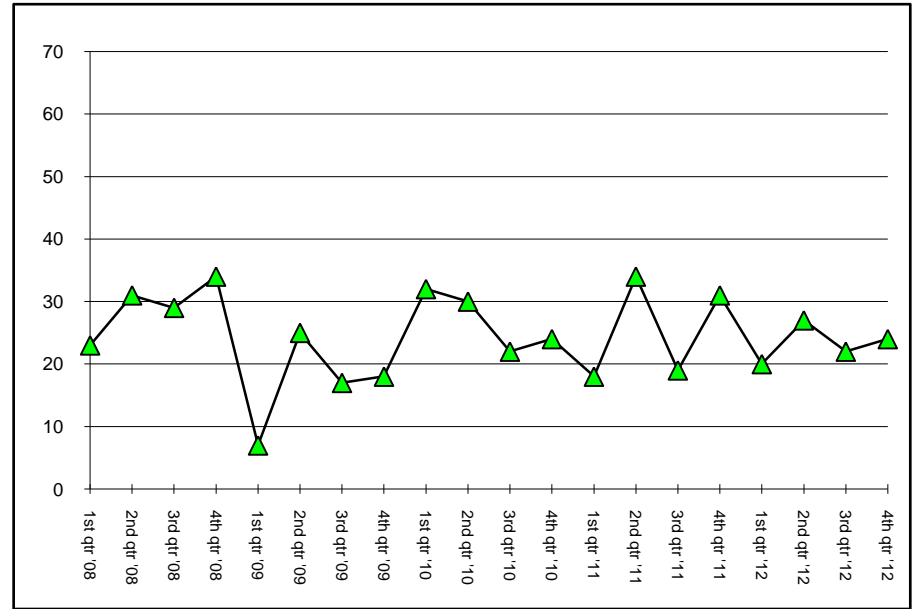
Used Single Family Residential for the 12 month period ending December 31, 2012



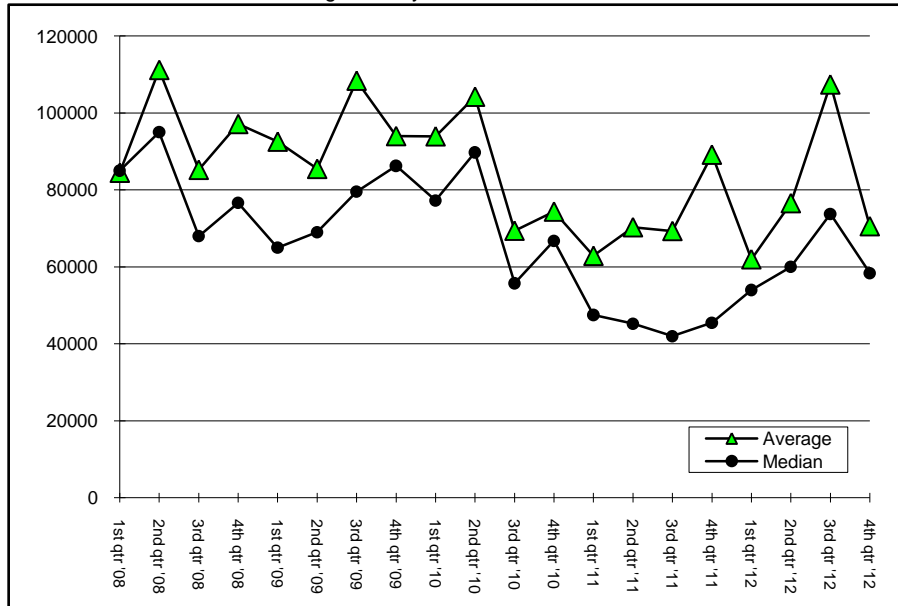
Data from "Grays Harbor County Real Market Data"

# Hoquiam & Vicinity

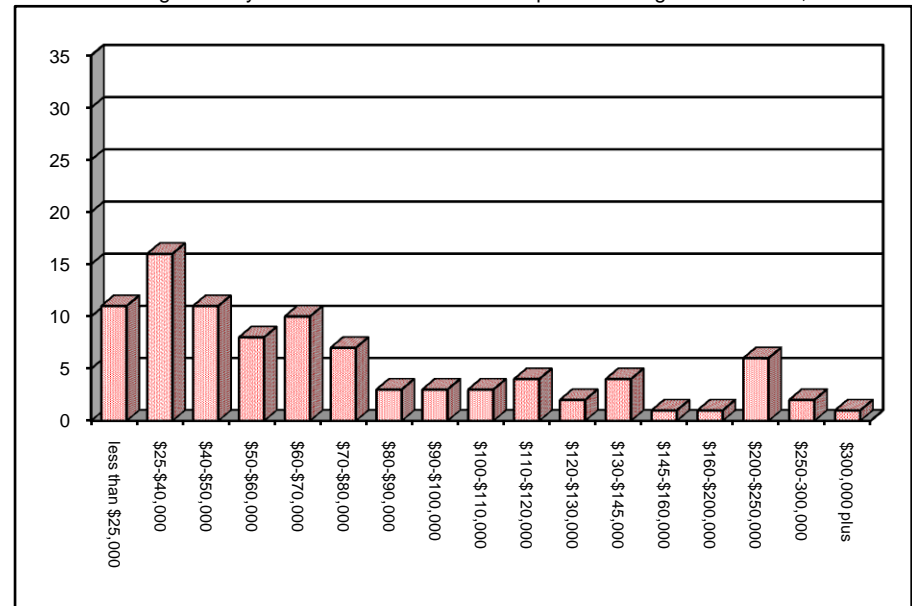
Closed Sales  
Used Single Family Residential, 5 acres or less



Average/Median Price  
Used Single Family Residential, 5 acres or less

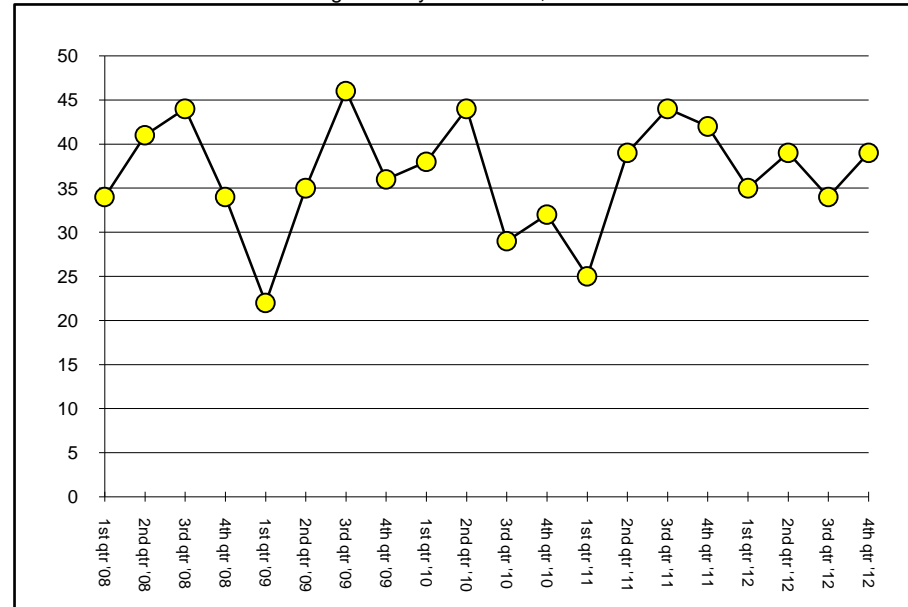


Price Ranges  
Used Single Family Residential for the 12 month period ending December 31, 2012

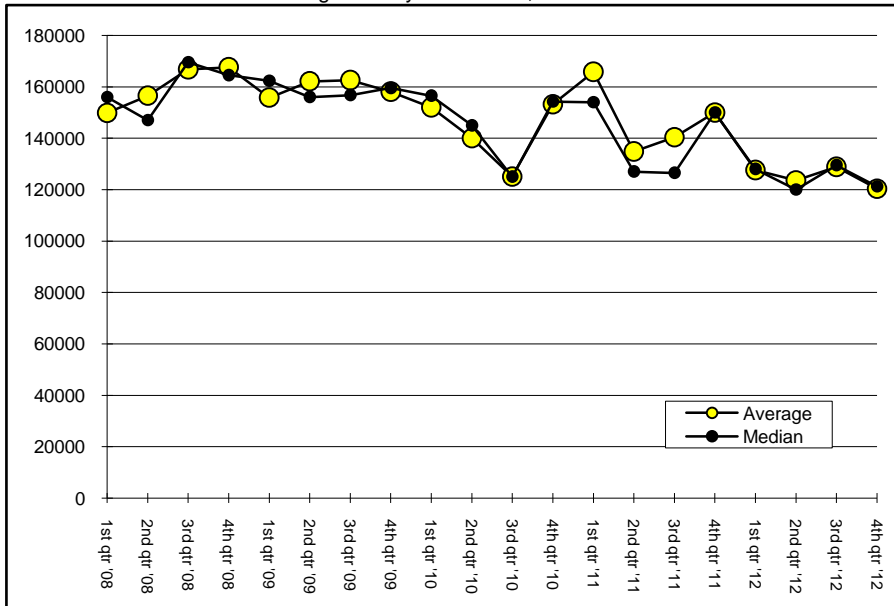


## East County and rest of County

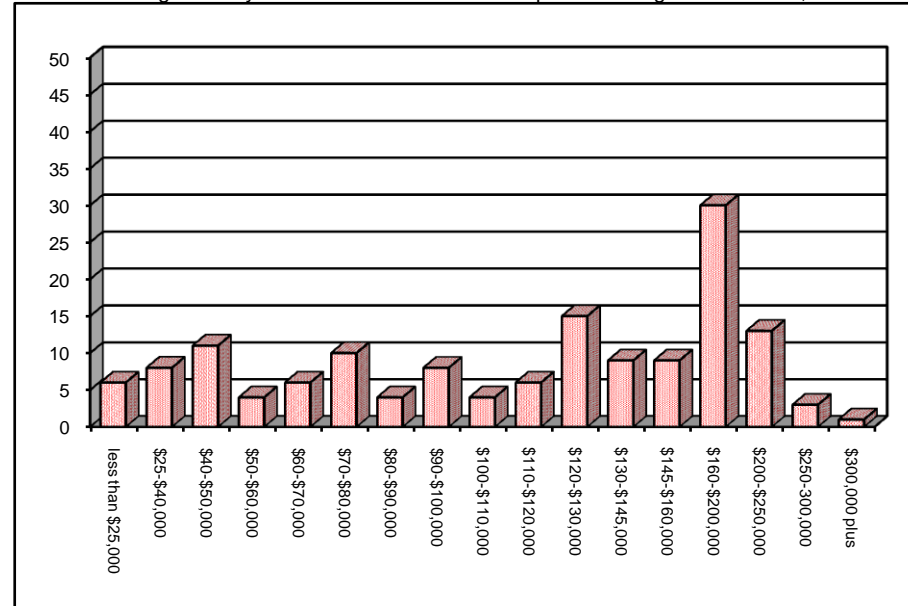
Closed Sales  
Used Single Family Residential, 5 acres or less



Average/Median Price  
Used Single Family Residential, 5 acres or less



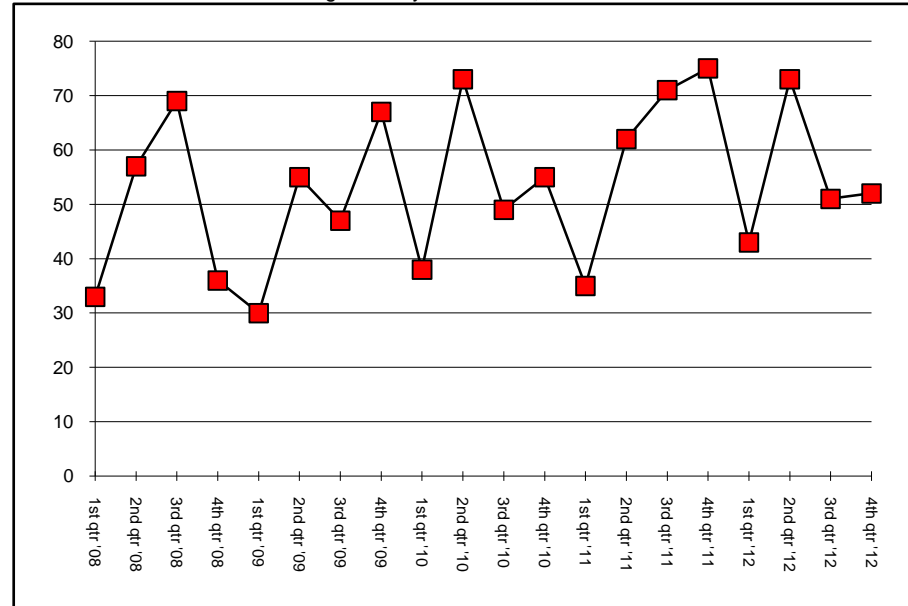
Price Ranges  
Used Single Family Residential for the 12 month period ending December 31, 2012



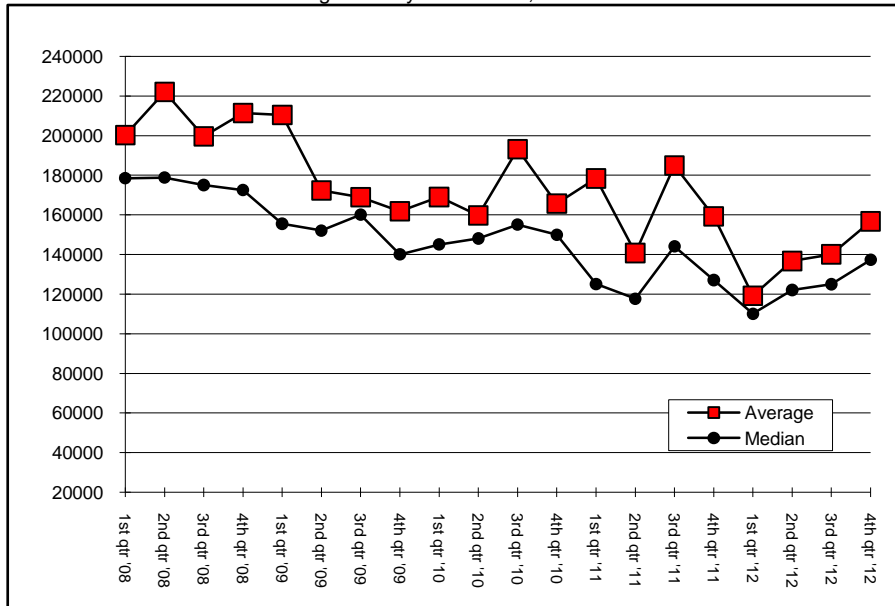
# Ocean Beach Areas

(Includes the Greater Westport and Ocean Shores areas.)

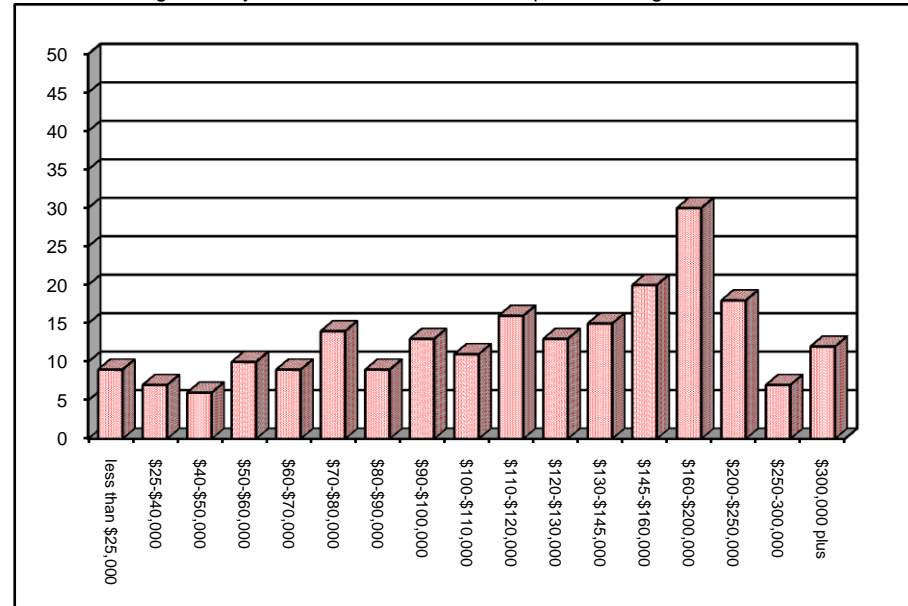
Closed Sales  
Used Single Family Residential, 5 acres or less



Average/Median Price  
Used Single Family Residential, 5 acres or less

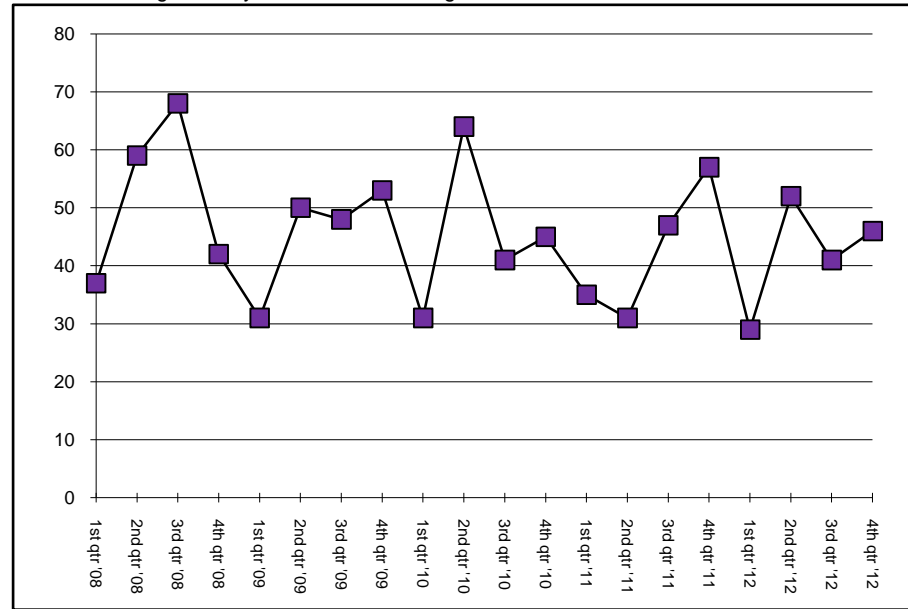


Price Ranges  
Used Single Family Residential for the 12 month period ending December 31, 2012

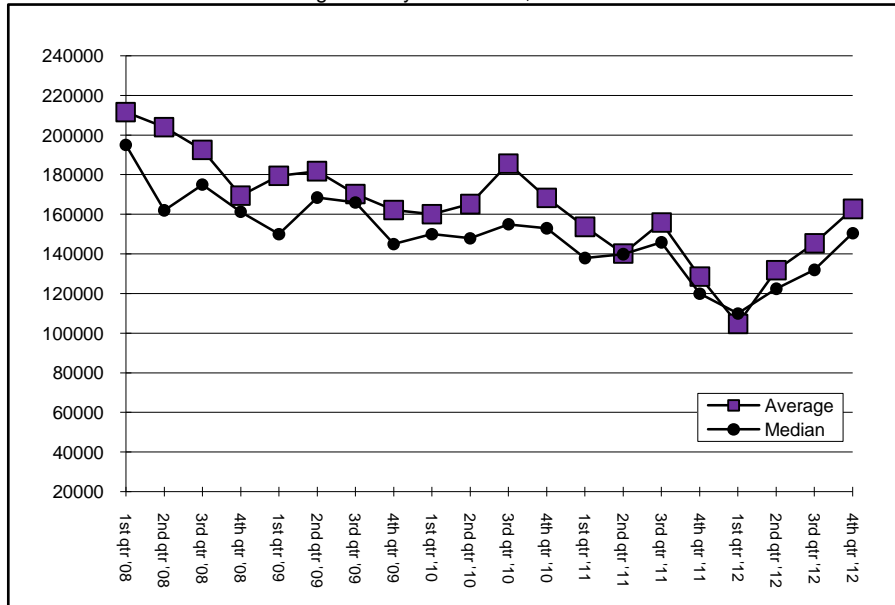


## Ocean Shores

**Closed Sales**  
Single Family Residential including New Construction on 5 acres or less



**Average/Median Price**  
Used Single Family Residential, 5 acres or less



**Price Ranges**  
Used Single Family Residential for a 12 month period ending December 31, 2012

